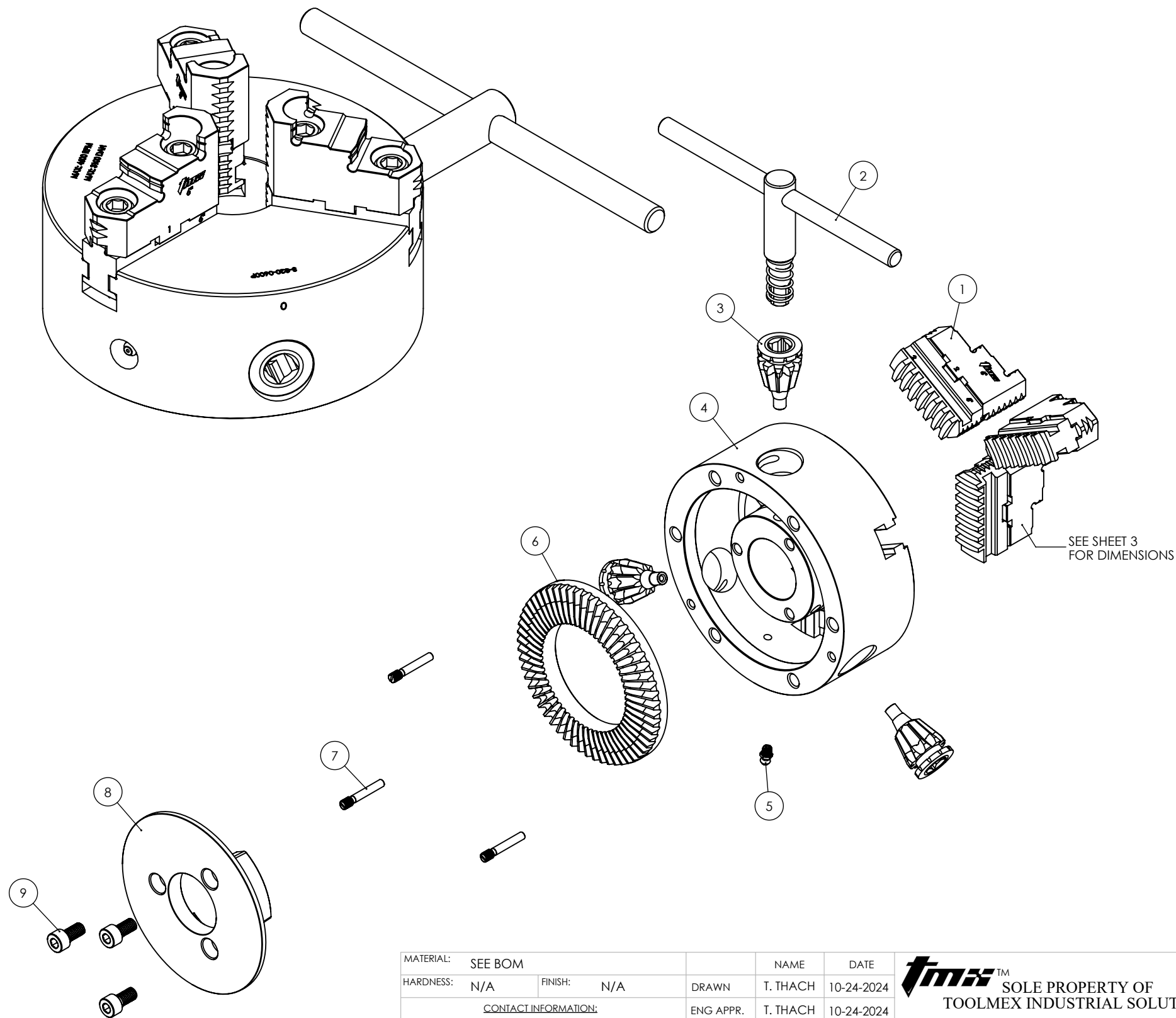


ITEM NO.	PART NUMBER	DESCRIPTION	
1	3-891-306P	FULL OEM JAW REPLACEMENT SET, 6IN, 3-JAW	3
2	3-889-008P	WRENCH FOR 6IN & 8IN SCROLL CHUCK	1
3	3-886-306P	PINION FOR 6IN SCROLL CHUCK	3
4	C-CK6-BDY3J	CHUCK BODY, 6IN	1
5	3-809-906P	FITTING, GREASE	1
6	3-887-306P	SCROLL PLATE FOR 6IN CHUCK	1
7	3-888-906P	PINION SCREW FOR 5IN&6IN CHUCK	3
8	C-CK6-COVER	PLATE, COVER, MACHINED	1
9	3-899-310P	SHCS, M8x1.25X16	3

-CLICK ON LINK BELOW FOR REPLACEMENT PARTS-

WWW.TOOLMEX.COM

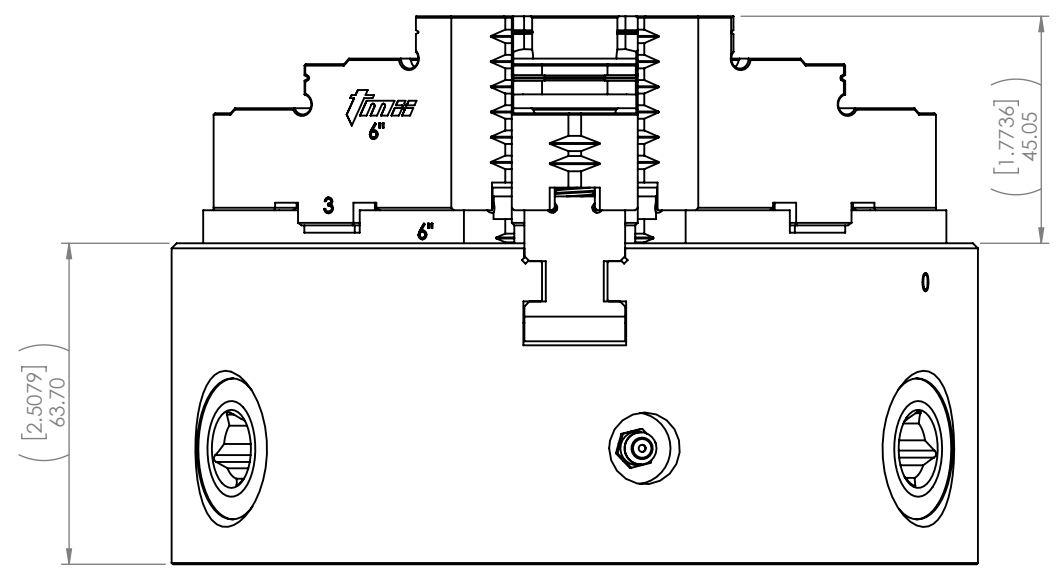
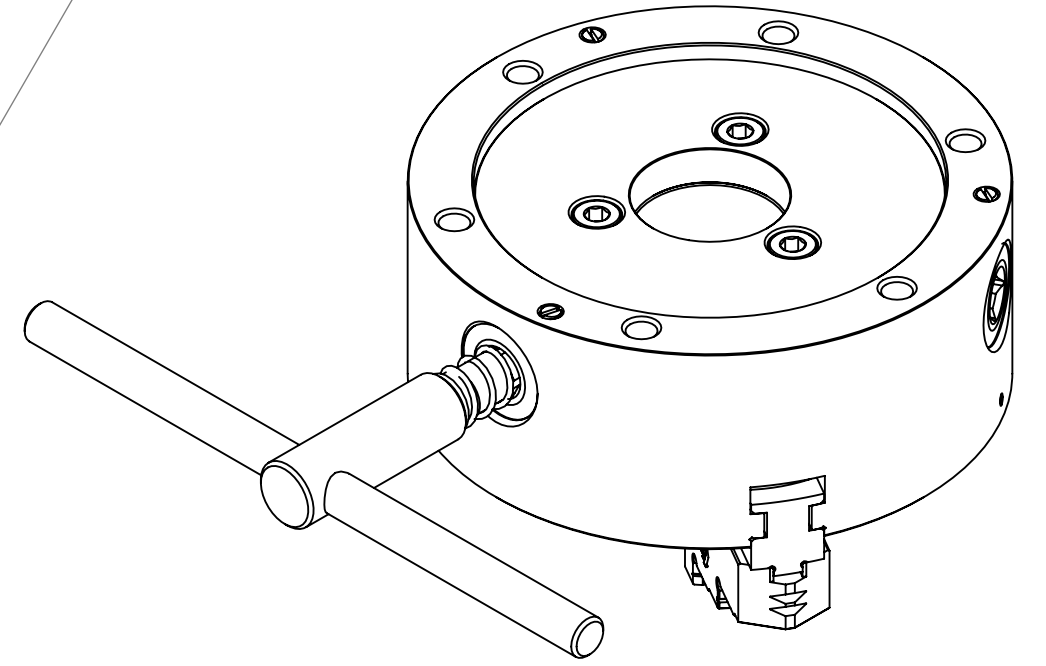
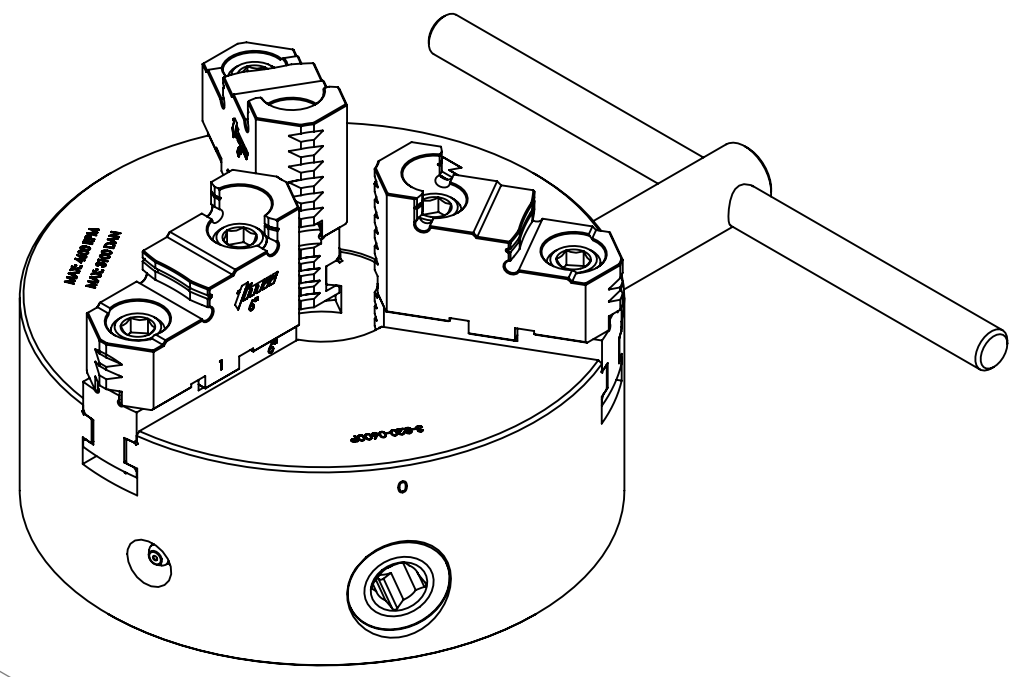
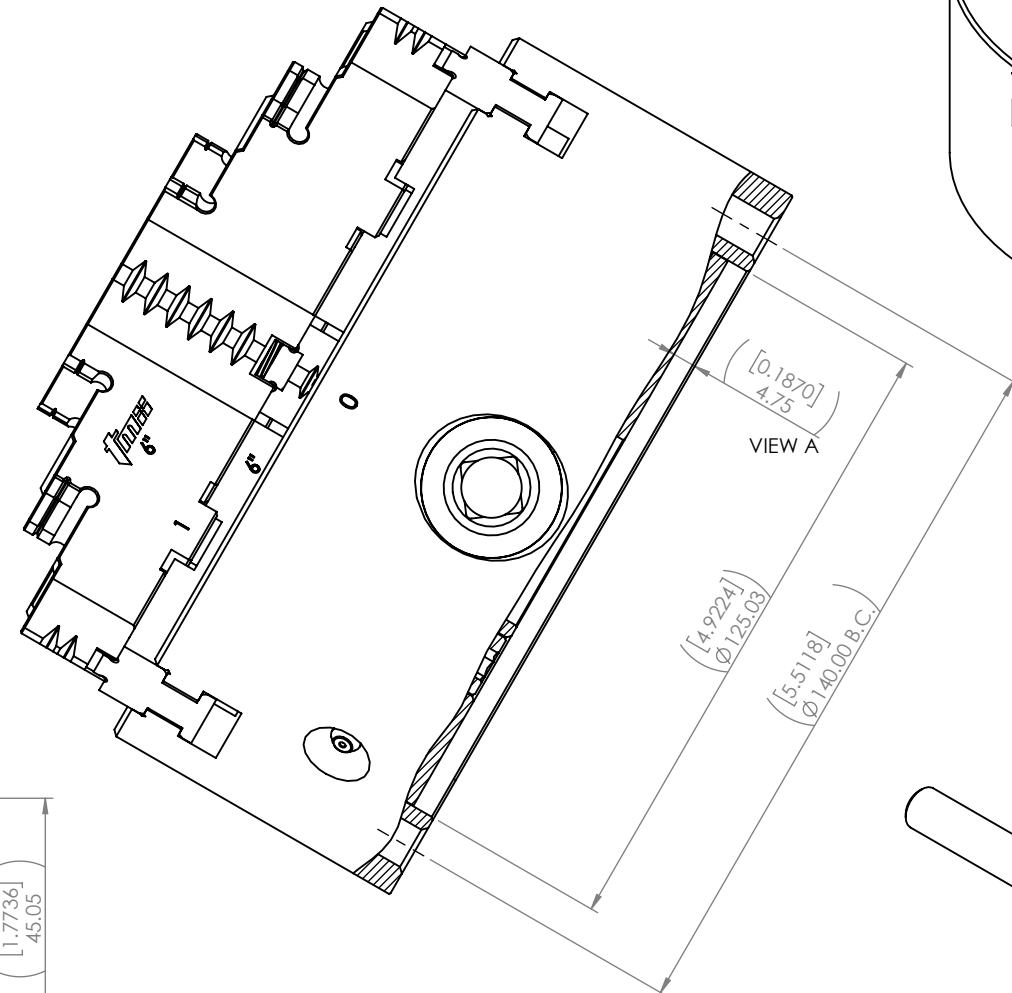
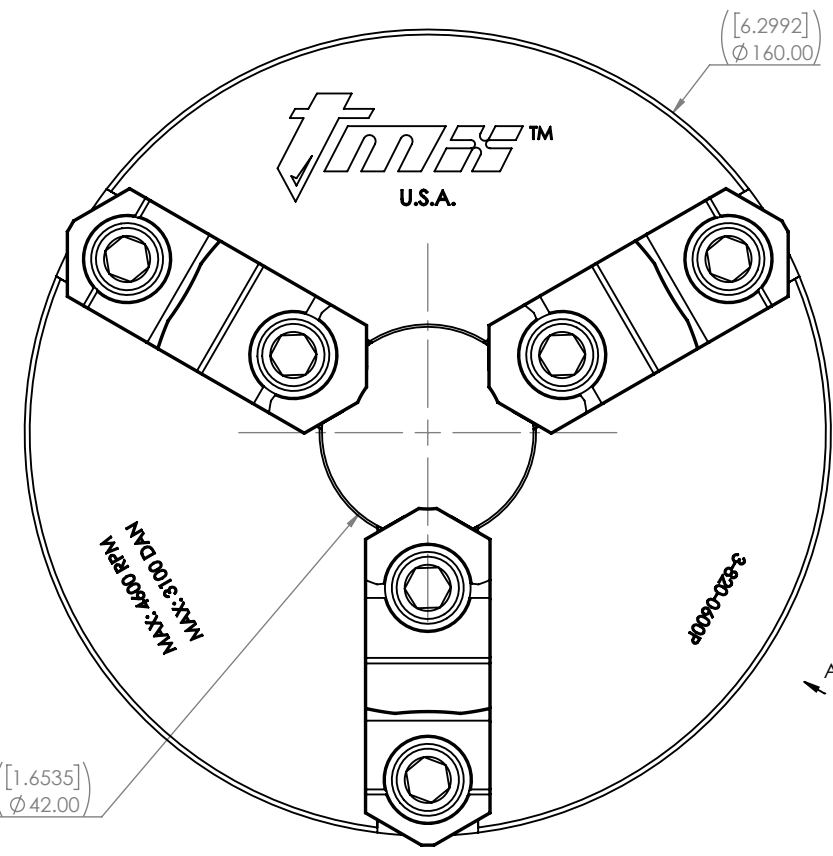


SELLING UNIT: EACH
 CHUCK TYPE: SCROLL
 CHUCK SIZE: 6IN
 BODY MATERIAL: FORGED STEEL
 NUMBER OF JAWS: 3
 JAW TYPE: 2 PIECES
 WEIGHT: 22 LBS
 MOUNT TYPE: FRONT
 GRIPPING FORCE: 3100 daN
 SPEED: 4600 RPM Max.

MATERIAL:	SEE BOM	NAME	T. THACH	DATE	10-24-2024
HARDNESS:	N/A	FINISH:	N/A	DRAWN	T. THACH
CONTACT INFORMATION: Toll Free 855-869-2425 Fax 508-653-5110 www.tmxtools.com 34 TALBOT ROAD NORTH BOROUGH, MA 01532 USA			ENG APPR.	T. THACH	10-24-2024
INTERPRET GEOMETRIC TOLERANCING PER: Y1999-2001			MFG APPR.		
 THIRD ANGLE PROJECTION			Q.A. APPR.		
CONFIDENTIAL THIS DRAWING AND THESE SPECIFICATIONS ARE THE SOLE PROPERTY OF TOOLMEX INDUSTRIAL SOLUTIONS, AND SHALL NOT BE REPRODUCED, OR COPIED IN PART OR AS A WHOLE WITHOUT THE EXPRESS WRITTEN PERMISSION OF TOOLMEX INDUSTRIAL SOLUTIONS IS PROHIBITED.			SALES APPR.		
 SOLE PROPERTY OF TOOLMEX INDUSTRIAL SOLUTIONS					
TITLE		6IN PLAIN BACK MOUNT SCROLL CHUCK		SIZE	DWG. NO.
				B	3-820-0600P
				REV	A
UNITS IN MILLIMETER					
DO NOT SCALE DRAWING			SHEET 1 OF 3		

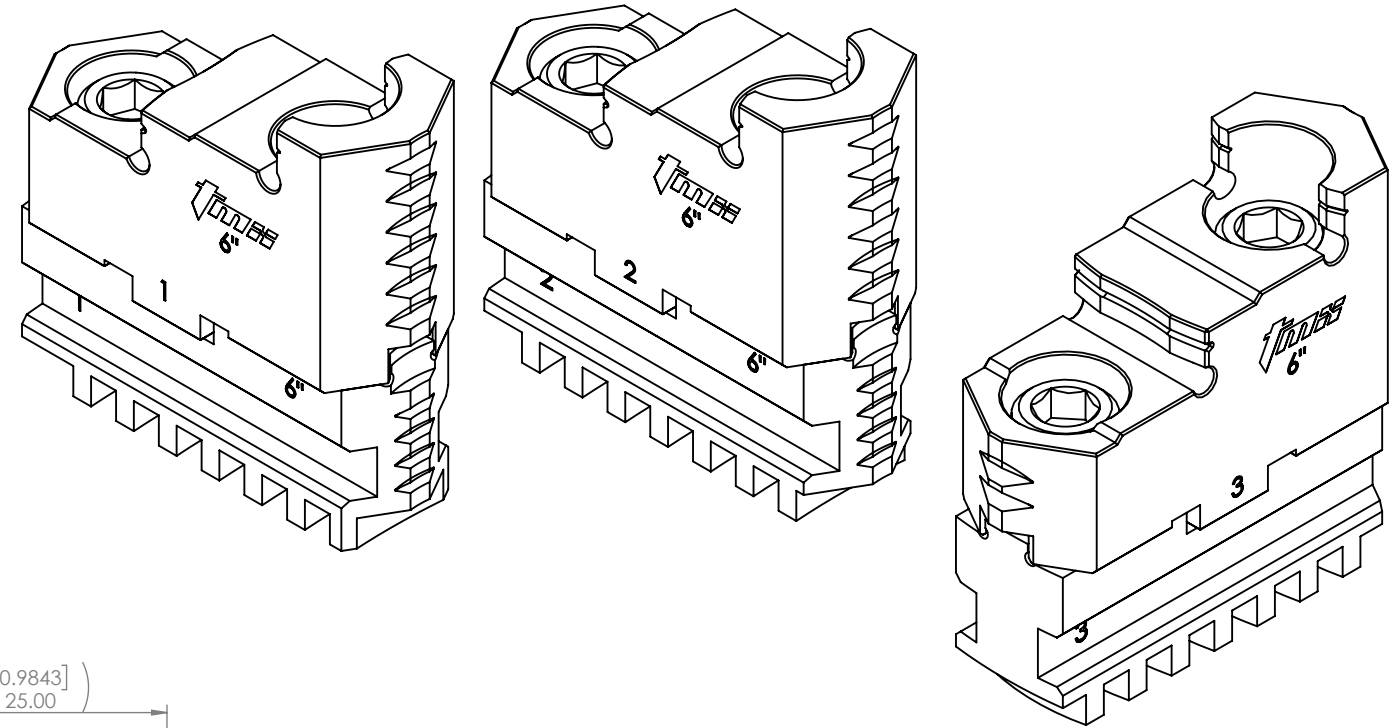
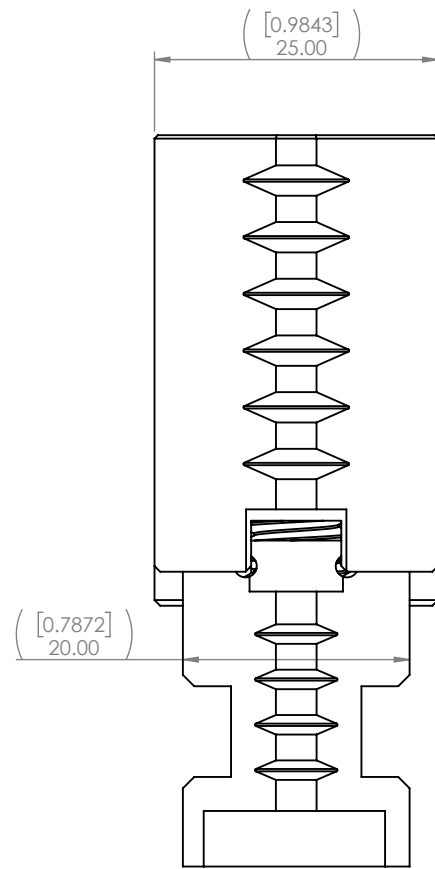
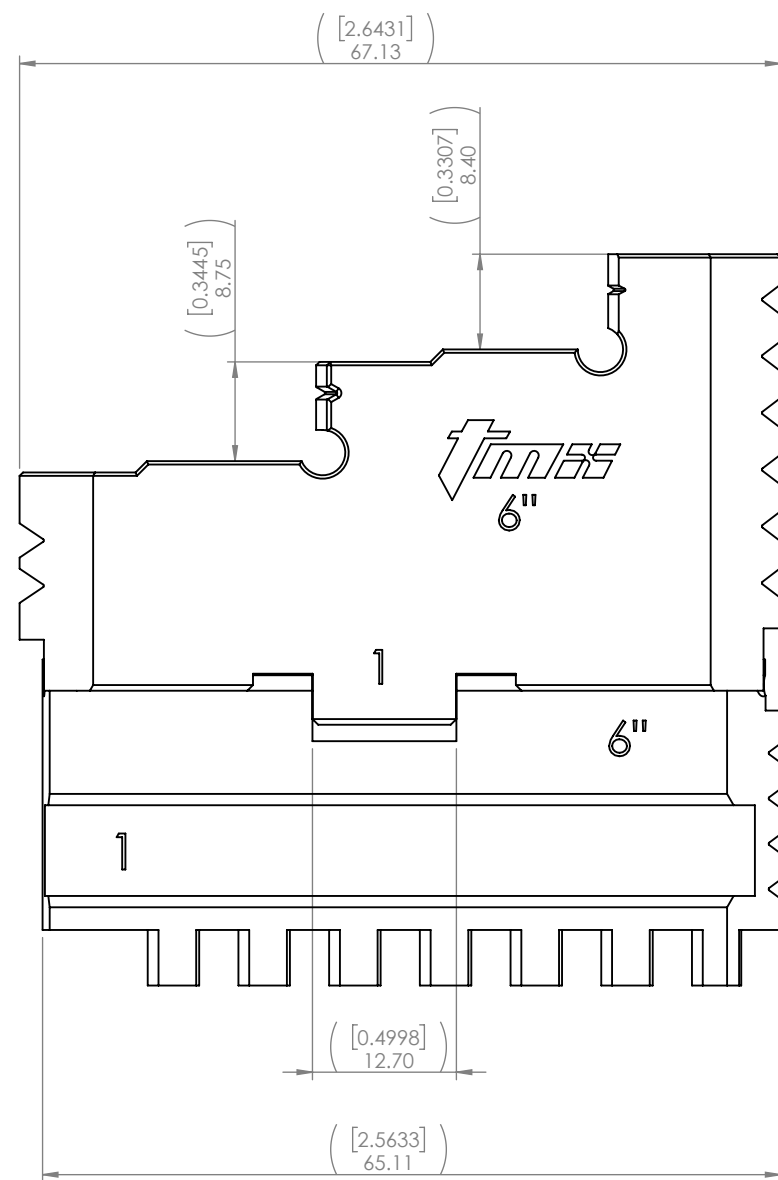
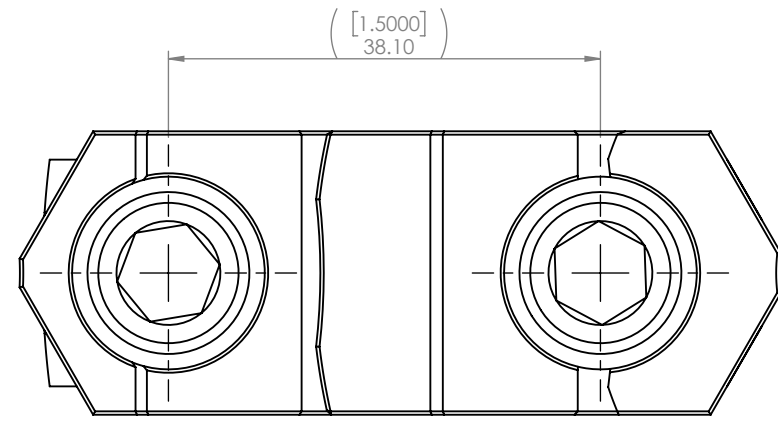
8 7 6 5 4 3 2 1

D
C
B
A





MATERIAL:	SEE BOM	NAME:	T. THACH	DATE:	10-24-2024
HARDNESS:	N/A	FINISH:	N/A	DRAWN:	T. THACH
<p>CONTACT INFORMATION: Toll Free 855-869-2425 Fax 508-653-5110 www.tmxtools.com 34 TALBOT ROAD NORTH BOROUGH, MA 01532 USA</p> <p>INTERPRET GEOMETRIC TOLERANCING PER: Y1999-2001</p> <p>THIRD ANGLE PROJECTION</p>			ENG APPR.:	T. THACH	10-24-2024
			MFG APPR.:		
			Q.A. APPR.:		
			SALES APPR.:		
<p>CONFIDENTIAL THIS DRAWING AND THESE SPECIFICATIONS ARE THE SOLE PROPERTY OF TOOLMEX INDUSTRIAL SOLUTIONS, AND SHALL NOT BE REPRODUCED, OR COPIED IN PART OR AS A WHOLE WITHOUT THE EXPRESS WRITTEN PERMISSION OF TOOLMEX INDUSTRIAL SOLUTIONS IS PROHIBITED.</p>			<p>tmx™ SOLE PROPERTY OF TOOLMEX INDUSTRIAL SOLUTIONS</p>		
<p>TITLE 6IN PLAIN BACK MOUNT SCROLL CHUCK</p>		SIZE	DWG. NO.	REV	
		B	3-820-0600P	A	
<p>UNITS IN MILLIMETER</p>					
DO NOT SCALE DRAWING			SHEET 2 OF 3		

8 7 6 5 4 3 2 1



-CLICK ON LINKS BELOW FOR REPLACEMENT PARTS-
[3-883-306P, HARD TOP JAWS, 6IN, 3-JAW 3 PC SET](#)
[3-885-306P, HARD MASTER JAWS, 6IN, 3-JAW 3 PC SET](#)

MATERIAL:	SEE BOM	NAME:	T. THACH	DATE:	10-24-2024	 TOOLMEX™ SOLE PROPERTY OF TOOLMEX INDUSTRIAL SOLUTIONS	
HARDNESS:	N/A	FINISH:	N/A	DRAWN:	T. THACH		TITLE 6IN PLAIN BACK MOUNT SCROLL CHUCK
<u>CONTACT INFORMATION:</u> Toll Free 855-869-2425 Fax 508-653-5110 www.tmxtools.com 34 TALBOT ROAD NORTH BOROUGH, MA 01532 USA				ENG APPR.:	T. THACH		
				MFG APPR.:			Q.A. APPR.:
INTERPRET GEOMETRIC TOLERANCING PER: Y1999-2001				SALES APPR.:		UNITS IN MILLIMETER	
 THIRD ANGLE PROJECTION				CONFIDENTIAL THIS DRAWING AND THESE SPECIFICATIONS ARE THE SOLE PROPERTY OF TOOLMEX INDUSTRIAL SOLUTIONS, AND SHALL NOT BE REPRODUCED, OR COPIED IN PART OR AS A WHOLE WITHOUT THE EXPRESS WRITTEN PERMISSION OF TOOLMEX INDUSTRIAL SOLUTIONS IS PROHIBITED.		DO NOT SCALE DRAWING	
					SHEET 3 OF 3		